



***WHERE INNOVATION
MEETS PRECISION***

www.shivrajengineering.in

ABOUT US



Reputed Manufacturer
& Supplier, Since 2014



Latest Technology &
Updated Machines



Quality Services as
per Global Standards



Solutions According to
Client's Requirements



Experienced Research &
Development Department

VISION

To be recognized as the world's leading provider in the design, manufacturing, supply, and installation of PEBs and structures.

MISSION

Our mission is to achieve this vision by consistently offering high-quality products to our customers, backed by personalized service and dedication to excellence.

WHY SHEPL?



EXPERT PROFESSIONALS



LARGE PRODUCT LINE



EXPERIENCED EMPLOYEES



TRANSPARENT DEALINGS

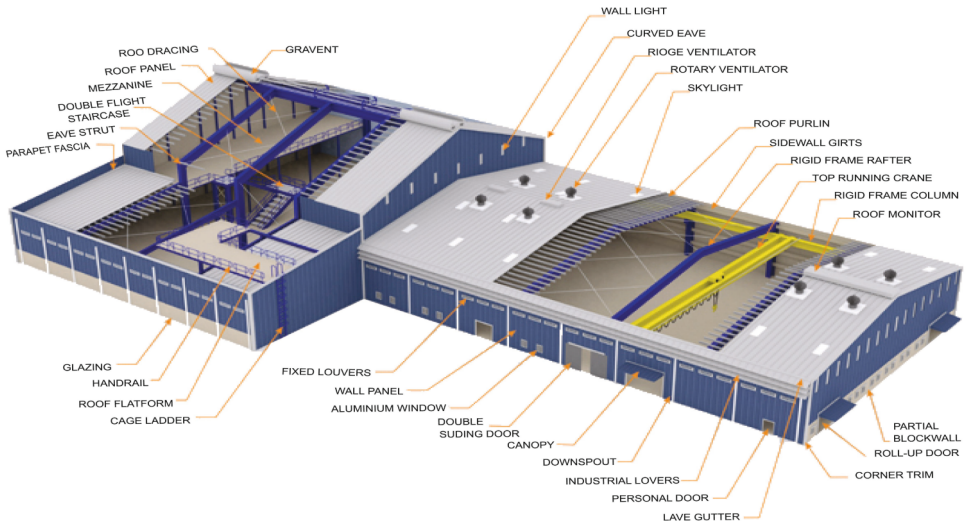


BELIEVE IN TEAM WORK



UNDERSTAND MARKET TRENDS

PEB STRUCTURES



PRIMARY FRAMING MEMBERS

Primary built-up members (H-Beams) are manufactured by plasma cutting of HR steel plates in required sizes, standards confirming to ASTM A572 Grade 345 Mpa. These plates of various sizes are welded together on one side by continuous welding and other side by stitch welding at regular intervals to make an H-beam. These are custom-built sections, so virtually any size of section can be made as per design requirement. Splice plates are welded at the end of different H - beam sections. These H-beam sections are assembled together by bolting the splice plates to make a complete frame assembly. The Primary members are available in high grade steel of minimum yield strength of 345 Mpa.

SHEPL Pre-Engineered Steel Buildings are 100% custom designed to provide maximum space utilisation, excellent strength and highest safety standards.

SECONDARY FRAMING MEMBERS

Purlins, girts and eave struts are secondary structural members used to support the wall and roof panels. Purlins are used on the roof; girts are used on the walls and eave struts are used at the intersection of the sidewall and the roof.

SECONDARY MEMBERS HAVE TWO OTHER FUNCTIONS

- Act as struts that help in resisting part of the longitudinal loads that are applied on the building such as wind and earthquake loads
- Provide lateral bracing to the compression flanges of the main frame members thereby increasing frame capacity.

Purlins, girts and eave struts are available in high grade steel of minimum yield strength of 345MPa in 1.5mm to 2.5mm thicknesses. These members come with a pre-galvanized finish or with a coat of Zn chromate primer for corrosion protection.

ROOFING AND WALL CLADDING PANELS

SHEPL Pre-engineered Buildings Offer Roofing and Wall Cladding Panels of 0.5 mm PPGI and 550Mpa Galvalume material. Standard roof panels are made of Bare Galvalume material and Wall Cladding panels are of colour coated Galvalume material. Panel paintfilm thickness is 25 microns on the exterior weather face and 5-7 microns of PU compatible epoxy primer on the interior face. The sheeting material is with hot dip Metallic coating of Galvalume 150 gm/m² total, AZ 150 as per ASTM A792 or AS 1392, and wall coated with 25 microns regular modified polyester paint system applied on Zinalume.

SHEPL offers a choice of different- 2 colours in wall cladding panels. These Roofing and wall cladding panels have excellent corrosion and weather resistance longer spanning capability, Thermal efficiency, long durability & safety.

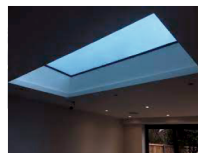
ACCESSORIES



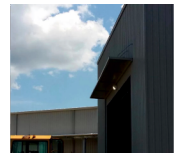
RIDGE VENT



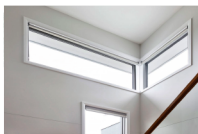
TURBO VENTILATOR



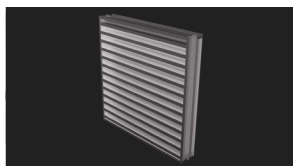
SKY LIGHT



CANOPY



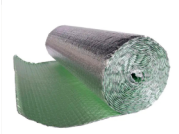
WALL LIGHT



S TYPE LOUVERS



WALL OPENING



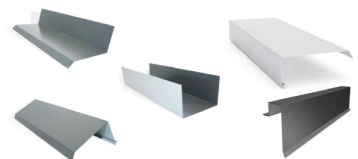
INSULATION



FASCIA



FASTENERS



TRIMS AND FLASHINGS

COMPLETE SOLUTIONS

SHEPL Pre-engineered Buildings does far more than supply and erection of Pre Engineered metal buildings. We offers complete solutions to the customer enabling them to focus on their organization strategic goals. we undertake a single source responsibility for the project through co-ordination of all the departments viz.

- **Design & Engineering**
- **Manufacturing**
- **Project management**
- **Logistics**
- **Erection**

ADVANTAGES OF PEB

- Super fast construction in comparison to conventional construction methods.
- Cost effective and economical building solution.
- Column less large clear spans can be easily achieved with effective costing .
- Pre-Engineered building offers great flexibility in terms of Future expansions and modifications.
- Due to manufacturing under factory controlled environment, highest Quality standards are maintained.
- Long durability and Low maintenance cost.
- Pre-Engineered building construction is green building construct ion due to recyclable properties of steel.
- Hassle free construction for client due to single source responsibility of Pre-Engineered building supplier.

PROJECTS EXECUTED



10,00,000(Ten Lakh + Sq.ft) delivered

INFRASTRUCTURE



40000 Sq. Ft.
Premises



Permanent
Building



Machinery



Inhouse team



45+ Skilled
Employees



10Cr. Annual
Turn Over



STRENGTH, INTEGRITY, AND INNOVATION

the pillars of heavy industrial fabrication,
shaping industries and nations!

CONTACT US

 +91 87960 08186 | 73500 08186

 info@shivrajengineering.in
marketing@shivrajengineering.in

 Gat No 189, Near Saptapadi Lawns, Dehu- Yelwadi Road, Yelwadi,
Tal. Khed, Dist. Pune 412109